



M6350 Soft Phone Quick Install Guide



System Requirements

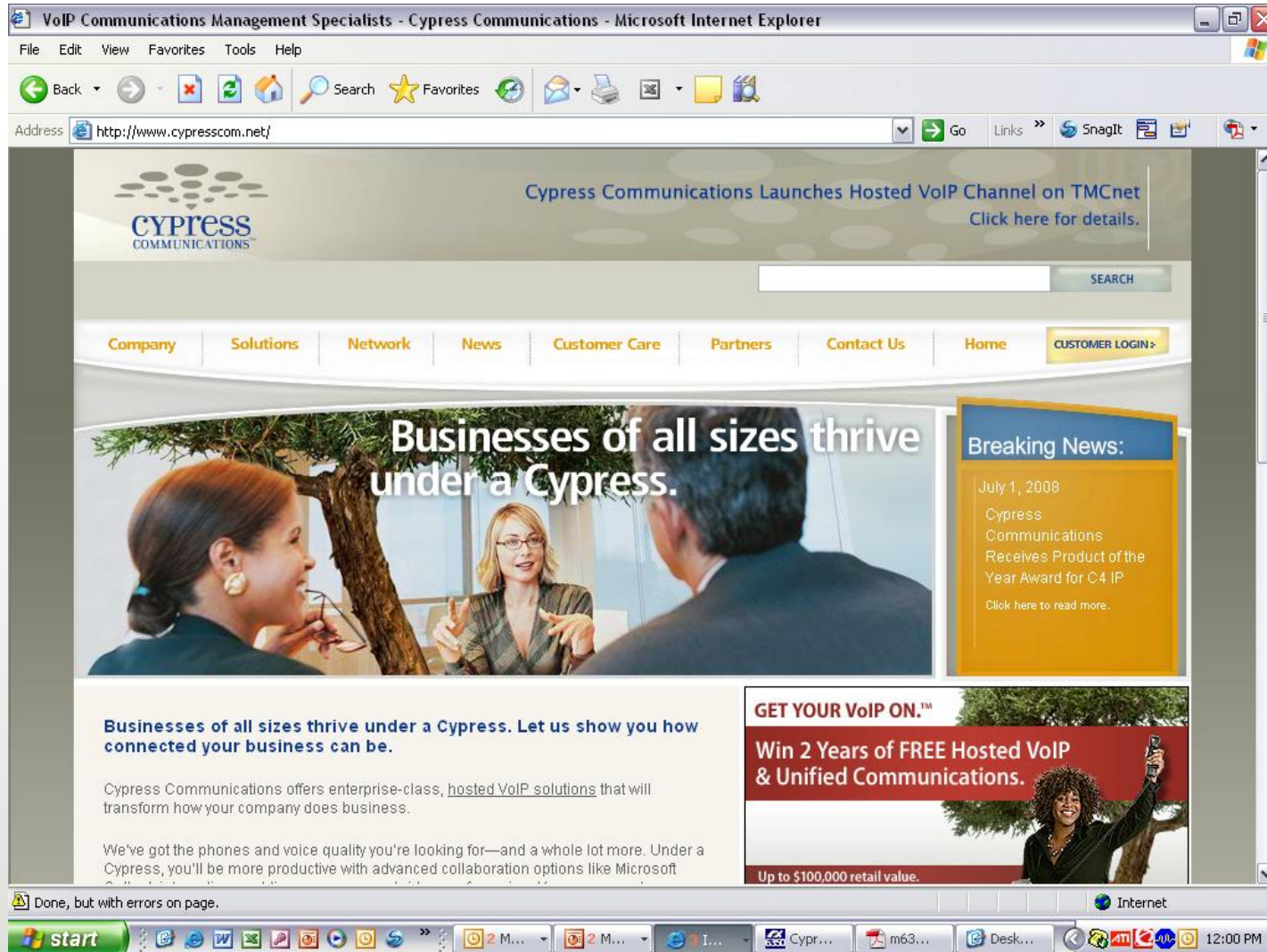
The following represents the minimum system configuration supported by Nortel.
Audio quality varies depending on the configuration used:

Minimum recommended hardware and operating system requirements

- Pentium II Personal Computer (PC)
- Memory: 64 Mb RAM with pre-Windows 2000 or 128 Mb RAM with Windows 2000 or later
- Windows 2000 or Windows XP (the latest Service Pack)
- Windows-compatible full duplex PCI sound card (ISA cards not supported)
- A good quality headset that ensures that audio levels do not exceed health and safety regulations specified for acoustic shock and that also minimizes cross-talk between microphone and ear-piece.
- IP connection (dial-up, xDSL, cable, or Ethernet)
- Screen resolution of 800x600 pixels (1024x768 pixels if both of the KEMs are displayed)
- Internet Explorer 5 (or later) to allow server-resident options
- Mouse or other pointing device

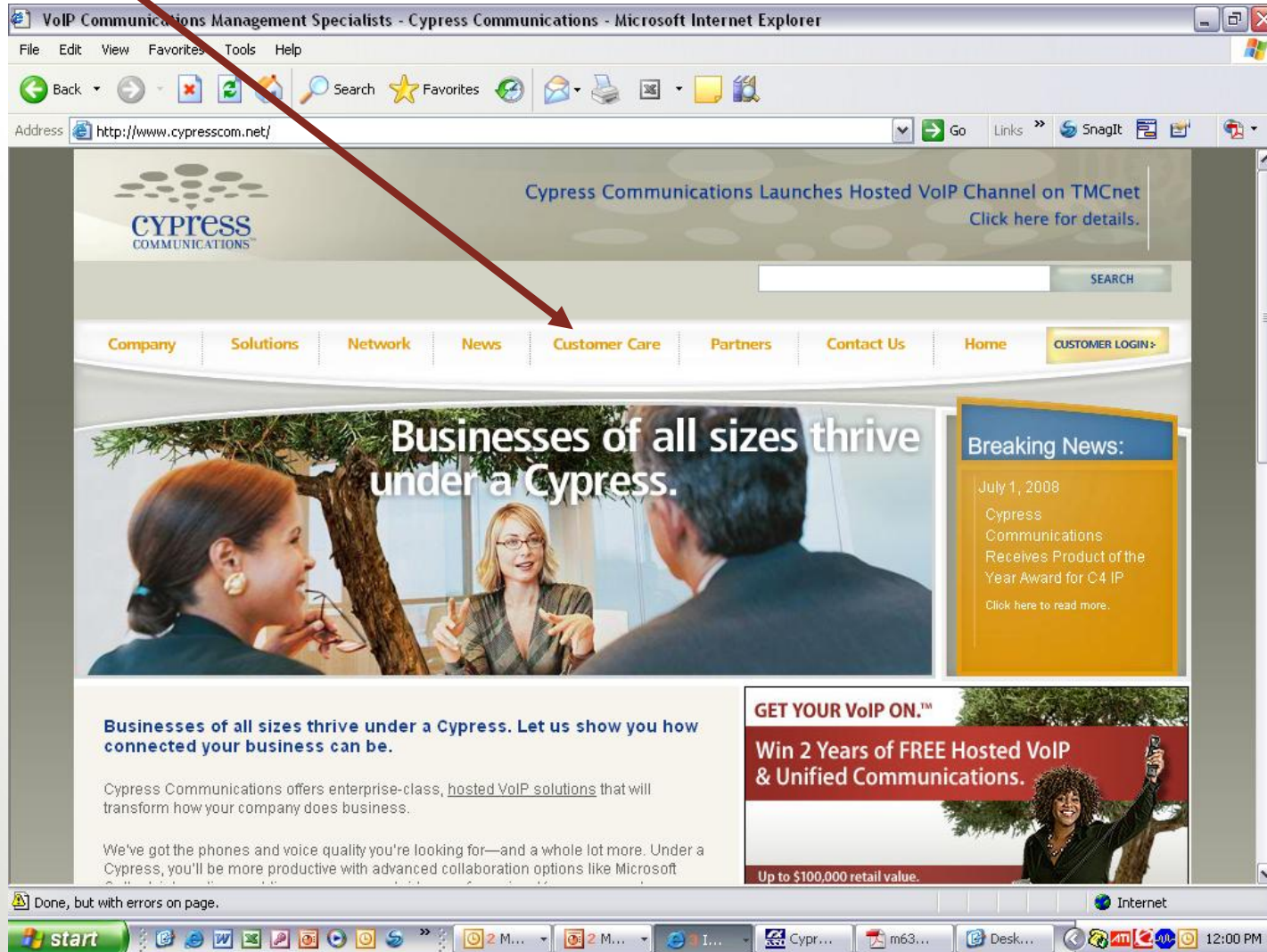
M6350 Installation

1. From your browser go to: <http://www.cypresscom.net>



M6350 Installation (cont.)

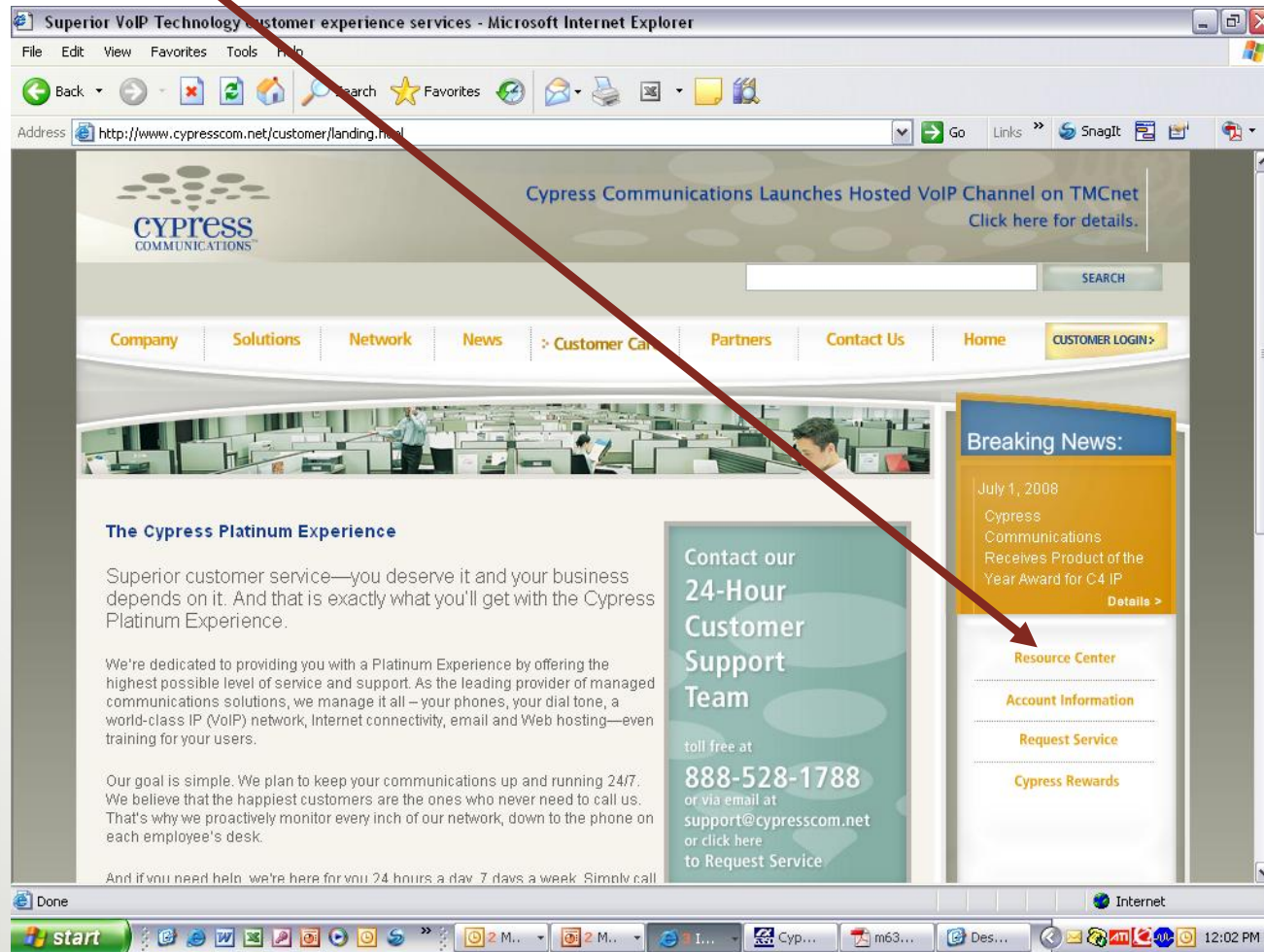
2. Click Customer Care



The screenshot shows the Cypress Communications website in Microsoft Internet Explorer. The browser title is "VoIP Communications Management Specialists - Cypress Communications - Microsoft Internet Explorer". The address bar shows "http://www.cypresscom.net/". The website header features the Cypress Communications logo and a navigation menu with links for Company, Solutions, Network, News, Customer Care, Partners, Contact Us, and Home. A red arrow points to the "Customer Care" link. Below the navigation menu is a large banner with the text "Businesses of all sizes thrive under a Cypress." and a "Breaking News" section dated July 1, 2008, announcing a Product of the Year Award for C4 IP. At the bottom, there is a promotional banner for "GET YOUR VoIP ON.™" offering "Win 2 Years of FREE Hosted VoIP & Unified Communications." with a value of "Up to \$100,000 retail value." The Windows taskbar at the bottom shows the Start button, several open applications, and the system clock at 12:00 PM.

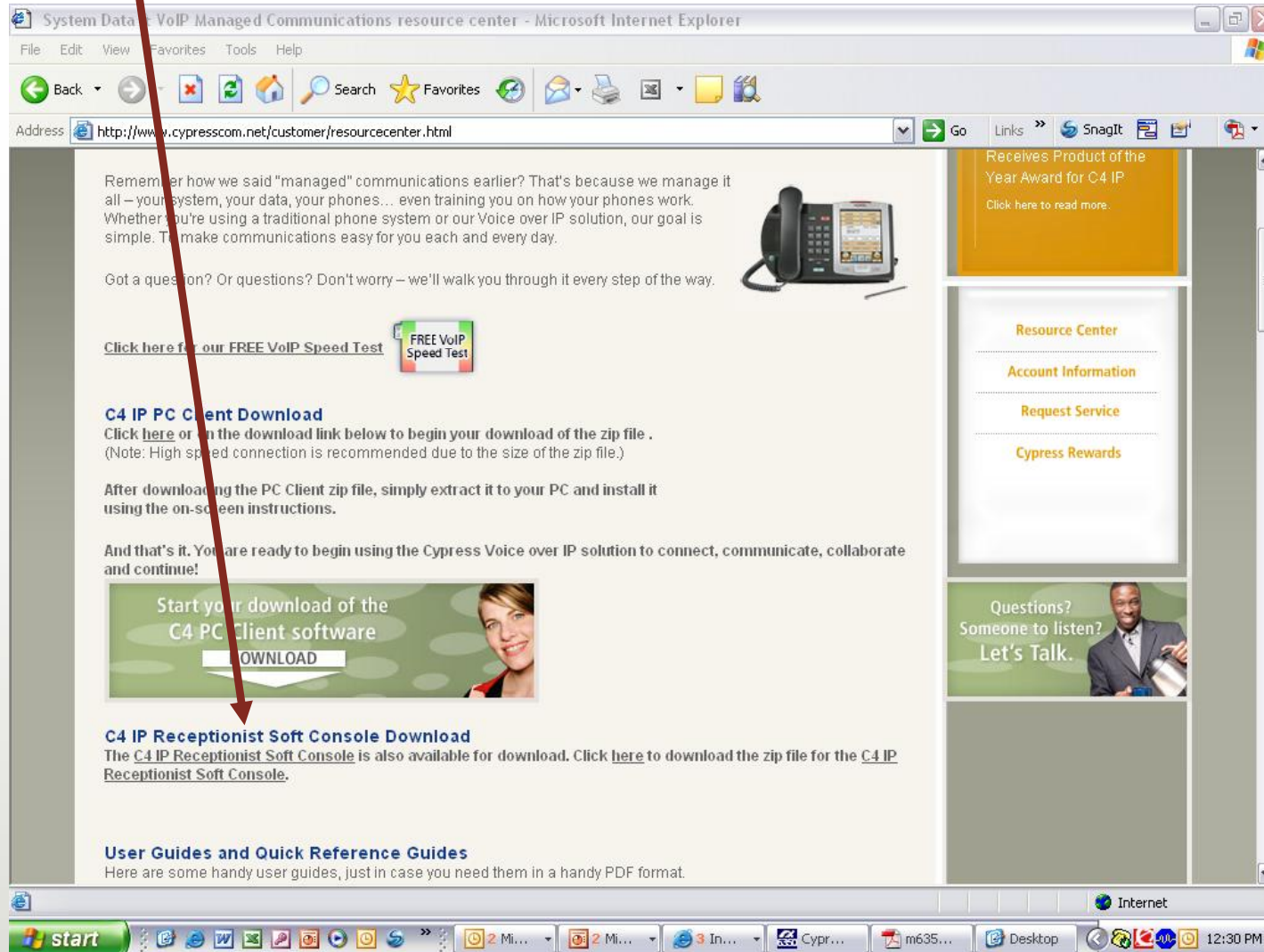
M6350 Installation (cont.)

3. Click Resource Center



M6350 Installation (cont.)

4. Click C4 IP Receptionist Console Download

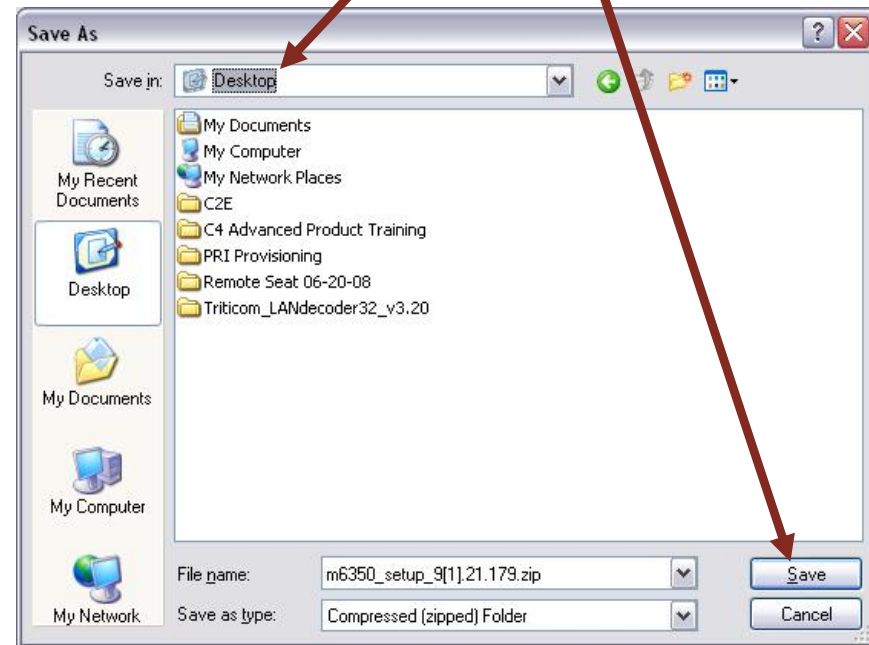


M6350 Installation (cont.)

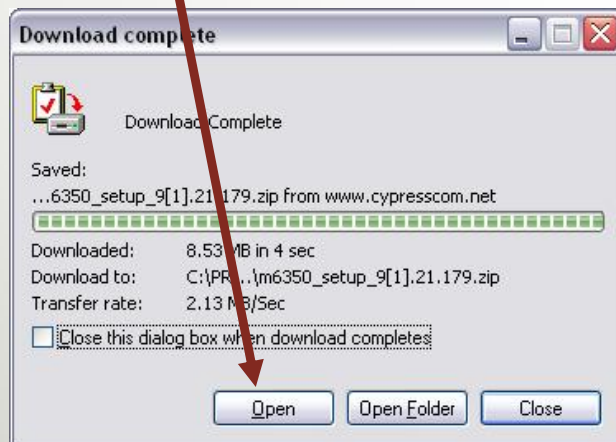
5. Click Save



6. Select a Destination. Click Save

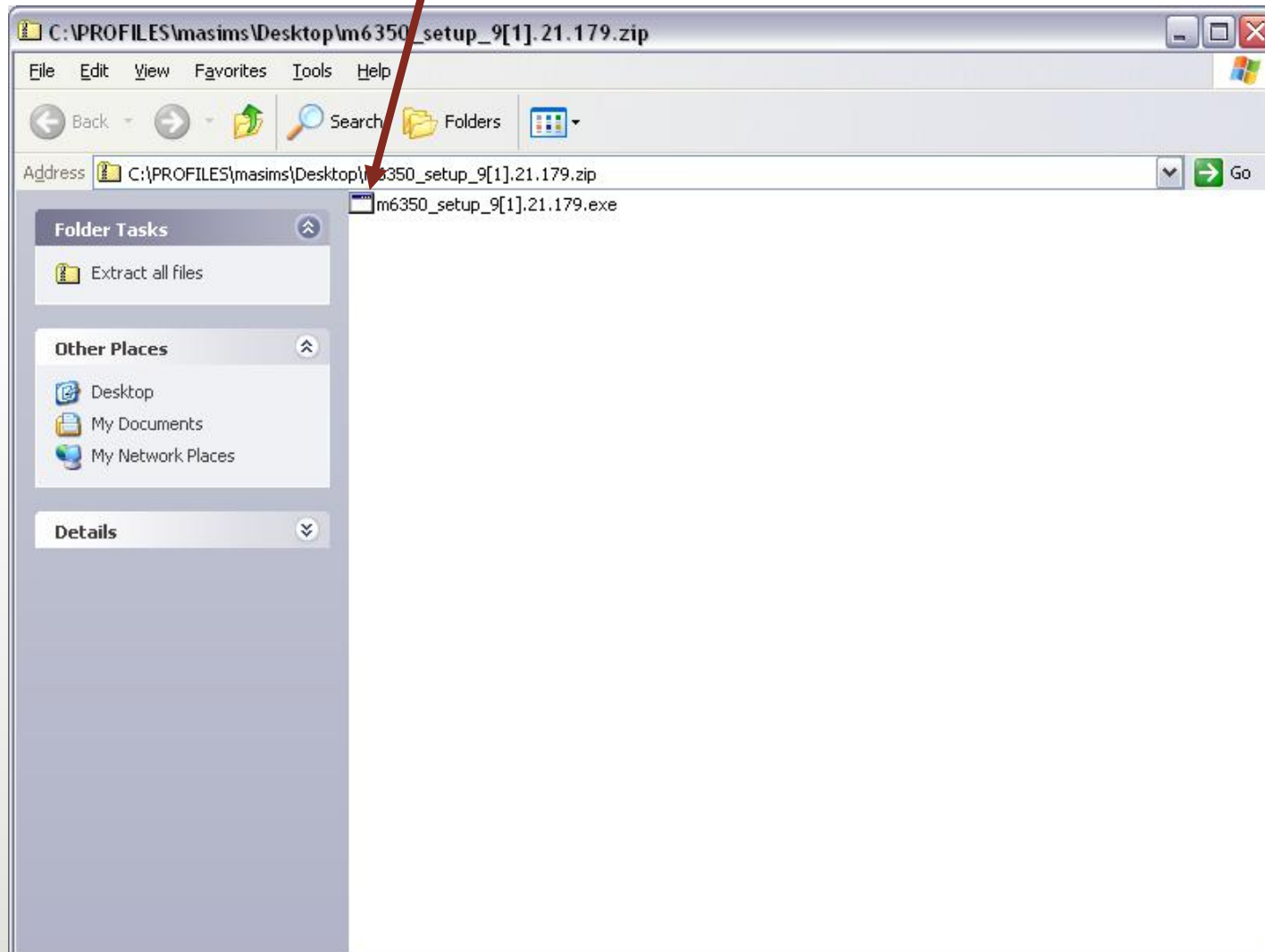


7. Click Open



M6350 Installation (cont.)

8. Run the m6350 installer by double-clicking m6350_setup.exe

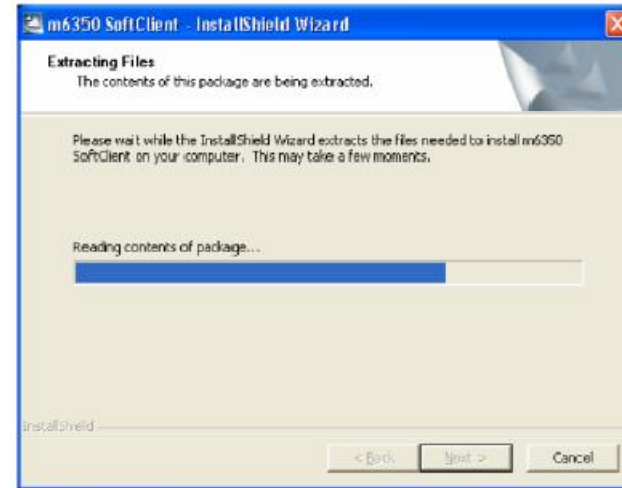


M6350 Installation (cont.)

9. The “Welcome” screen appears. Click Next



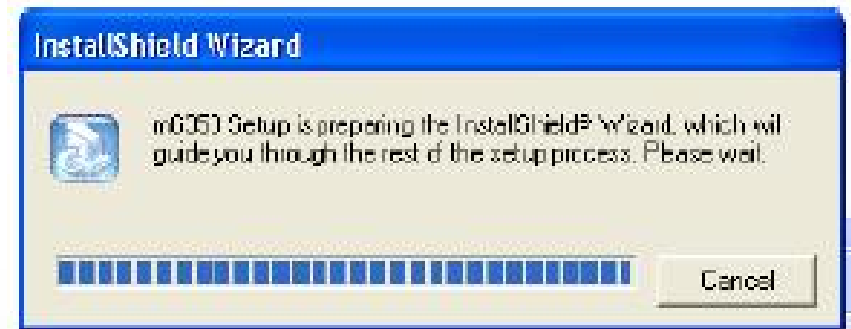
10. Click Next



11. When the dialog box appears, select a language and click OK.



12. Once the setup files are extracted, the setup program will run.

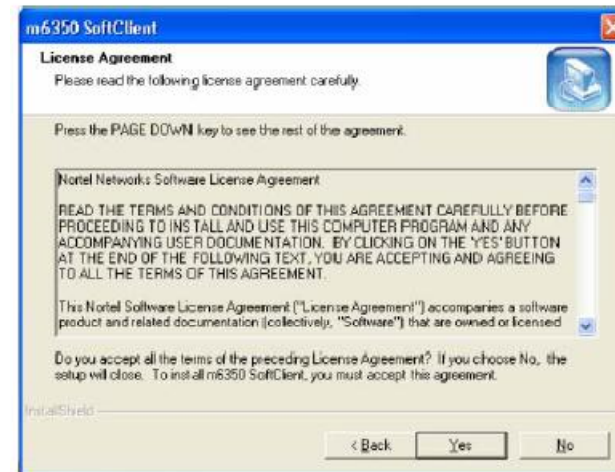


M6350 Installation (cont.)

13. Click Next.



14. Accept the license agreement.



15. Select an alternate folder, or click Next.

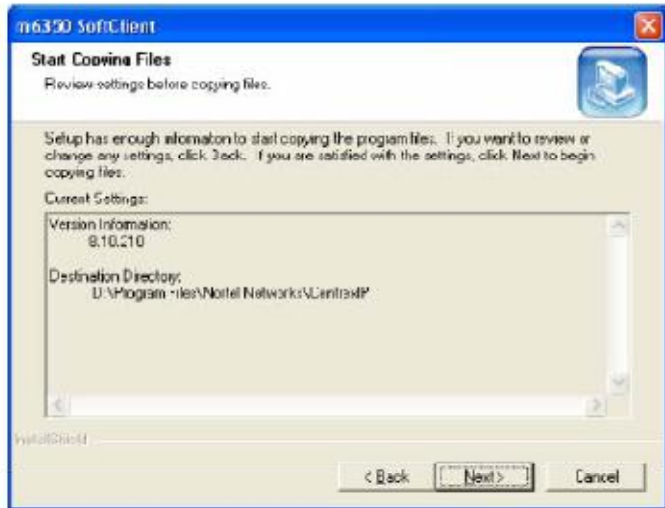


16. Click Next to select the existing folder.

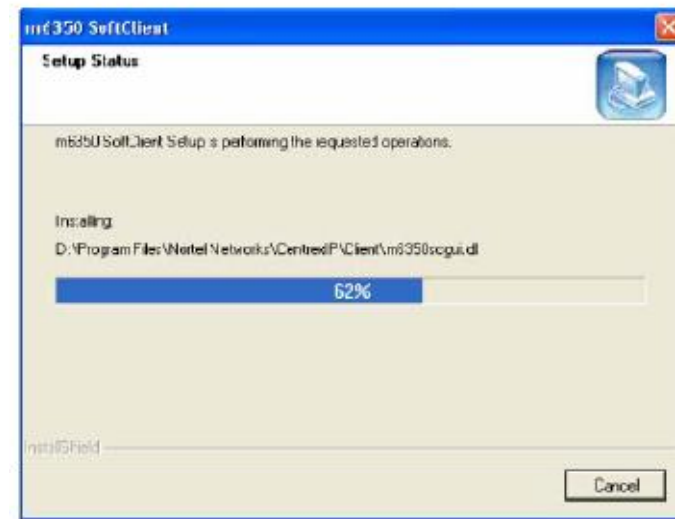


M6350 Installation (cont.)

17. Click Next.



18. Files will be copied.



19. Choose options and click Finish.



M6350 Configuration

Running the M6350 Configuration Wizard

The Configuration Wizard is used to:

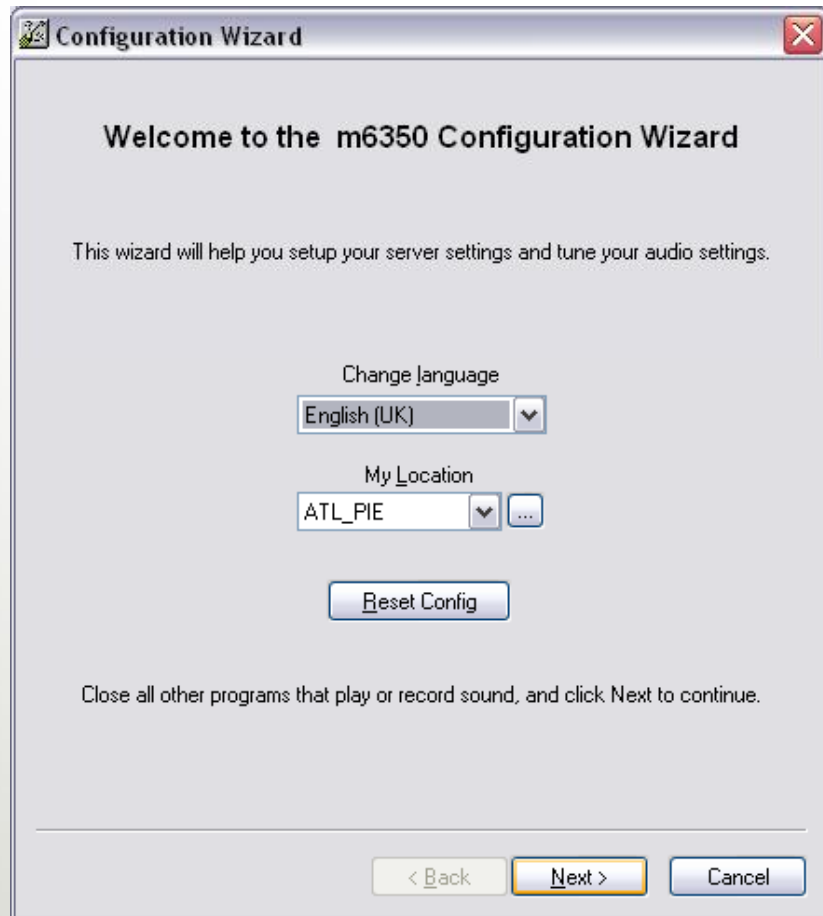
- Select the preferred language
- Configure server settings and your PC's network connection
- Select and tune the audio devices

To Start the Configuration Wizard:

- Enter a checkmark in the checkbox next to *"I would like to configure the M6350"* on the last installation screen.
- Click **Start > Settings > Control Panel > M6350**

M6350 Configuration (cont.)

1. Select Language and Location. Click Next.



Configuration Wizard

Welcome to the m6350 Configuration Wizard

This wizard will help you setup your server settings and tune your audio settings.

Change language
 English (UK) ▾

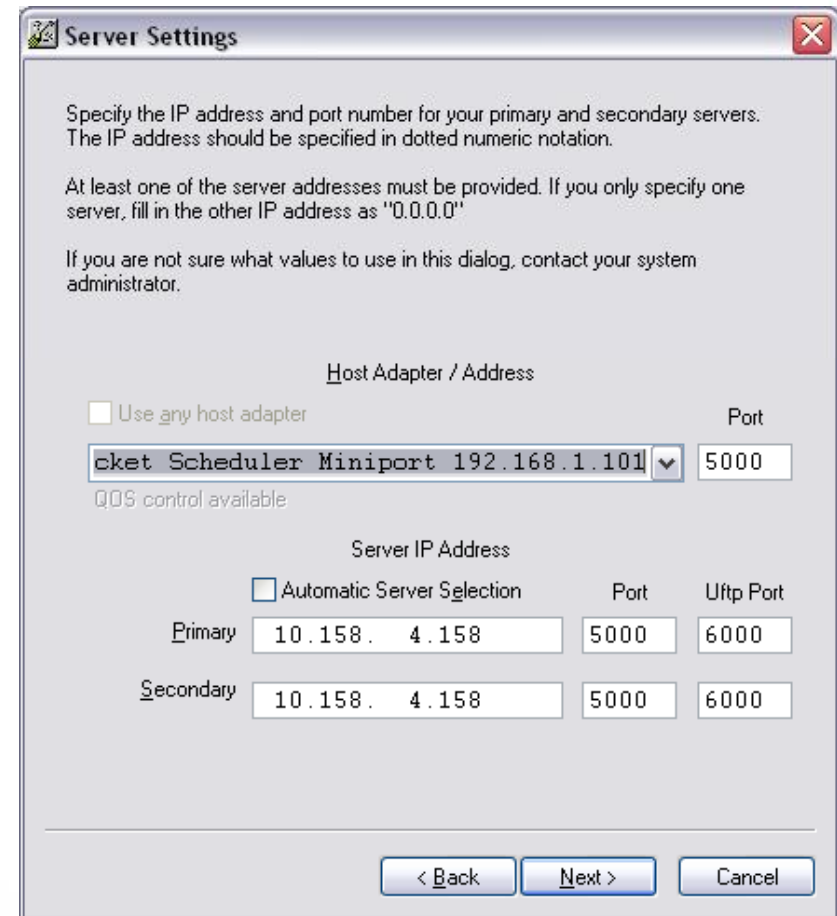
My Location
 ATL_PIE ▾ ...

Reset Config

Close all other programs that play or record sound, and click Next to continue.

< Back **Next >** Cancel

2. Select Host Adapter. Enter Server Addresses (can be same). Click Next.



Server Settings

Specify the IP address and port number for your primary and secondary servers. The IP address should be specified in dotted numeric notation.

At least one of the server addresses must be provided. If you only specify one server, fill in the other IP address as "0.0.0.0"

If you are not sure what values to use in this dialog, contact your system administrator.

Host Adapter / Address

Use any host adapter Port

cket Scheduler Miniport 192.168.1.101 ▾ 5000

QoS control available

Server IP Address

Automatic Server Selection Port Uftp Port

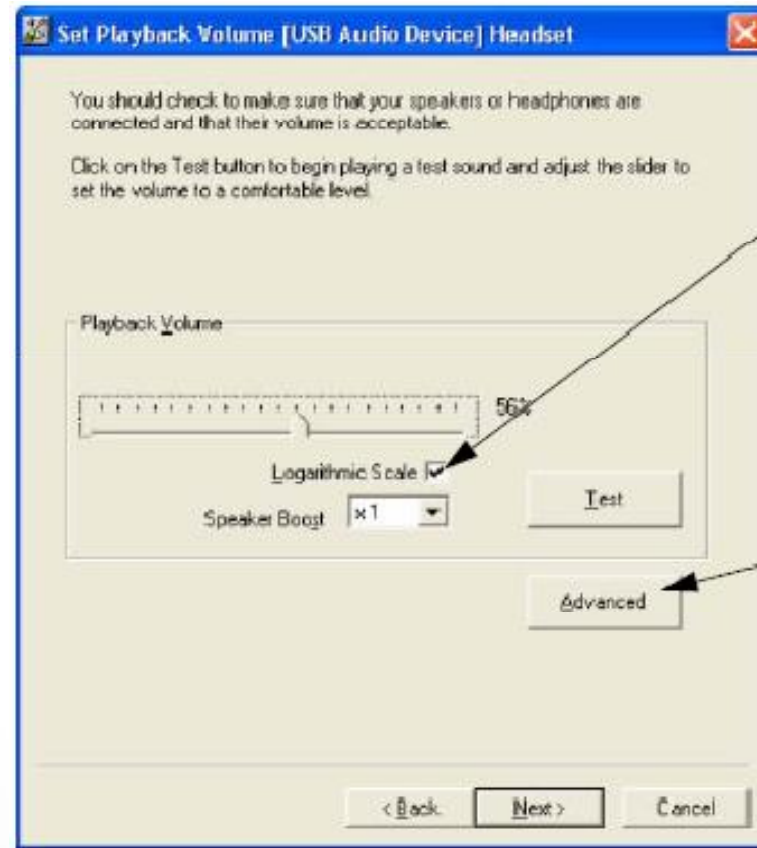
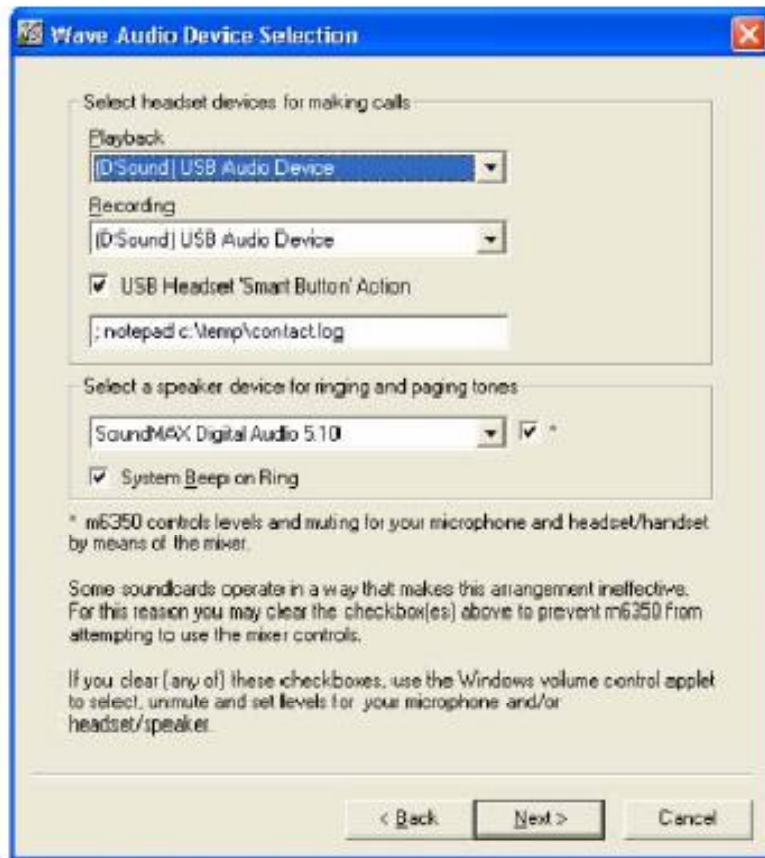
	IP Address	Port	Uftp Port
Primary	10.158.4.158	5000	6000
Secondary	10.158.4.158	5000	6000

< Back Next > Cancel

M6350 Configuration (cont.)

3. Select Audio Device for headset, microphone, and ringer. Click Next.

4. Test and adjust headset playback volume. Click Next.

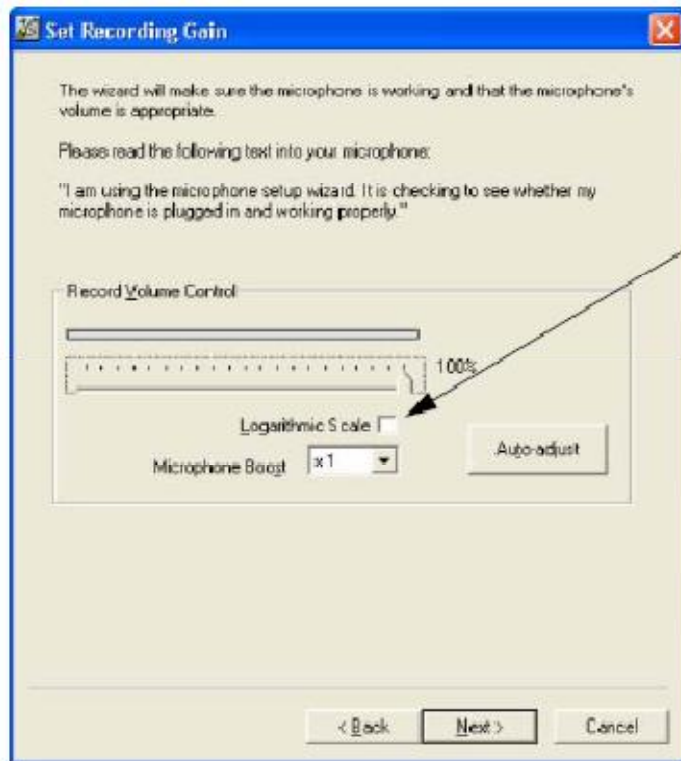


Check this box if the volume in your headset does not increase or decrease linearly when the slider is adjusted.

Do not use this button unless instructed to do so by your system administrator.

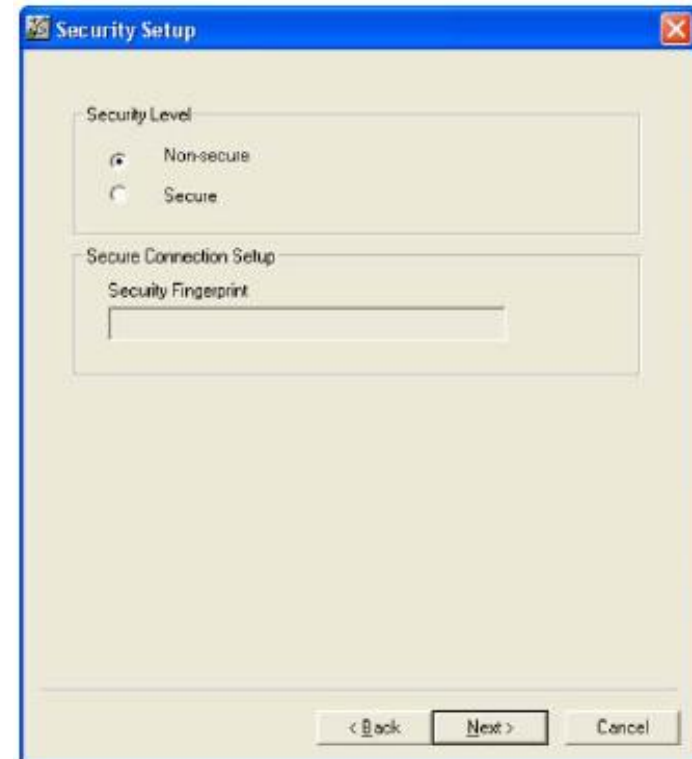
M6350 Configuration (cont.)

5. Test and adjust microphone volume. Click Next.



Check this box if the recording gain in your microphone does not increase/decrease linearly when the slider is adjusted (this is usually the same as speaker output).

6. Select Security Level. Click Next.



M6350 Configuration (cont.)

7. Click Finish.

